

Melbourne / Wednesday 18 May 2016

# Design Speaks

## Old School / New School

### 2016 Program

A forum about the future of education design



Design Speaks Symposia 2016:

Presenting Partner



Program Organizer



Old School / New School 2016:

Principal Partner



Major Partner



Venue Partner



# Program

Old School / New School brings together influential architects, designers, educators and social change leaders to discuss issues, share their experiences and speculate on possible futures for education design.

Four keynote speakers will explore the factors driving change in the design of learning environments. These sessions are presented alongside 15-minute case studies and a moderated panel discussion, devised to draw the audience into the conversation, while surveying education facilities here and abroad.

**Venue:** Clemenger BBDO Auditorium,  
NGV International, Melbourne

**Date:** Wednesday 18 May 2016

8.45 am Arrival and seating  
9.00 am Welcome from Cameron Bruhn,  
Editorial Director, Architecture Media

9.15 am **KEYNOTE ADDRESS**

**Monica Parker**  
Founder, Hatch (London)  
hatchstrategy.com

10.00 am **KEYNOTE ADDRESS**

**John Wardle**  
Principal, John Wardle Architects  
(Melbourne)  
johnwardlearchitects.com

10.45 am Morning tea

11.15 am **CASE STUDIES**

**Libby Guj**  
Design Principal, JCY Architects and  
Urban Designers (Perth)  
jcy.net

**Debbie Ryan**  
Director, McBride Charles Ryan  
(Melbourne)  
mcbridecharlesryan.com.au

**Marco Berti**  
Lecturer, Management Discipline Group,  
University of Technology Sydney (Sydney)  
uts.edu.au

12.15 pm **KEYNOTE ADDRESS**

**Michál Cohen**  
Director, Walters & Cohen  
Architects (London)  
waltersandcohen.com

1.00pm Lunch break

2.15 pm **KEYNOTE ADDRESS**

**Jan Owen**  
CEO, Foundation for Young  
Australians (Melbourne)  
fya.org.au

3.00 pm **PANEL DISCUSSION**

Monica Parker (chair), Jan Owen, John  
Wardle and Michál Cohen with questions  
from the audience

3.45 pm Closing comments from Cameron  
Bruhn, Editorial Director,  
Architecture Media

4.00 pm Closing drinks

5.00 pm Event closes

02

# Keynote Addresses

## **TEACHING RESILIENCE IN AN UNCERTAIN WORLD**

Presented by Monica Parker, founder, Hatch (London)

Disruption is the new norm. Change is the only constant. Sometimes change is a chosen directional shift, but frequently it manifests itself in an external nudge or even existential threat. Social science would say that there is a single element that underpins all successful coping strategies ... resilience. Research by the Chartered Institute of Personnel & Development found 90 percent of hiring managers cited resilience as a key attribute necessary for the workforce of the future. How are we teaching the workforce of the future for this critical skill? Learn what lessons we can take from current resiliency research about the workplaces of today to better understand how to create the most meaningful learning environments of tomorrow.

## **TITLE AND PRECIS – TBC**

Presented by John Wardle, principal, John Wardle Architects (Melbourne)

## 03 Keynote Addresses

### LEARNING, POLICY, AND THE WONDERFUL SCHOOL ENVIRONMENTS

Presented by Michál Cohen, director, Walters & Cohen Architects (London)

School buildings are a key component of the educational experience. The development of these buildings should focus on creating sustainable, creative and inspirational environments that enhance the users' appreciation and awareness of the issues affecting their local environment, the resources used within it, the global environment and the importance of good design. Also, understanding the ways in which young people learn influences design enormously, and we should aim to change the culture of education delivery from an institutional approach to one that is transformational, able to accommodate many teaching and learning styles and education that looks to the future. Drawing on Walters & Cohen's extensive portfolio of education buildings, Michál's presentation will look at the way people learn and the impact of policy on school buildings, with reference to her research into the effect of education on the built environment and the schools they have completed.

### THE NEW BASICS

Presented by Jan Owen, CEO, Foundation for Young Australians (Melbourne)

The Foundation for Young Australians' report *The New Basics: Big Data Reveals the Skills Young People Need for the New Work Order* shows that employers are placing a premium on enterprise skills at a time of change in our workforce. An analysis of 4.2 million job advertisements from 2012–2015 found there is rising demand for enterprise skills such as critical thinking (up 158%), digital literacy (up 212%), creativity (up 65%) and presentation skills (up 25%). On top of this, jobs advertisements that ask for enterprise skills are paying employees more, including digital literacy (an additional \$8,648 per year) and problem solving (an additional \$7,745 per year) and employers of younger workers are asking for an enterprise skill as often as a technical skill in job advertisements. Jan will explore how the findings of the FYA report can be interpreted to speculate on possible futures for the design of educational facilities.

## Case Study Talks

### **NGOOLARK STUDENT SERVICES BUILDING (PERTH)**

Presented by Libby Guj, design principal, JCY Architects and Urban Designers (Perth)

How parents, students, communities and industry partners choose one place for learning over another is far more complex than simply the courses available, their cost and educational quality. In choosing a place for learning, the criteria and qualities evaluated are multidimensional and increasingly focused on quality of place, services, ability to connect and partake both on and off site, and the provision of flexibility related to family and work commitments. Libby believes all institutions must consider the many requirements of students, staff and community, while being prepared to evolve frequently, smoothly and quickly with the certainty of change. Libby will present an in-depth case study of Ngoolark, the new Student Services Building at Edith Cowan University's Joondalup campus in Western Australia. Ngoolark creates an integrated student and research centre within a campus urban design framework that includes a public forecourt with pop-up retail, cafes and landscaped areas connecting the new facility to the surrounding buildings. The building becomes a 'place' that connects an entire precinct including the library, lecture theatre, the chancellor building and key campus pedestrian links.

### **IVANHOE GRAMMAR SCHOOL'S SCIENCE AND SENIOR YEARS CENTRE (MELBOURNE)**

Presented by Debbie Ryan, principal architect, McBride Charles Ryan (Melbourne)

At Old School/New School, Debbie will present on Ivanhoe Grammar's new Science and Senior Years Centre by MCR. The key characteristics of the project's learning spaces were transparency, variety of spatial type, multiple-use, flexibility, adaptability and interconnectivity between the learning spaces to the outside. The circular shaped plan form was adopted for the building; this shape had an appropriate civic quality that built upon the school's original masterplan. However, rather than adopting a circular or radial pattern, MCR chose to overlay an angular geometry. This geometry was used to define the central courtyards, the light wells and a mosaic of learning spaces. The circular form is classical, representing order and the certainty of knowledge – the building's expressive and complex mosaic of spaces represents the uncertainty and complexity of modern life and scientific understanding, and the necessity of the qualities of wonder and imagination to help us understand.

# Case Study Talks

## **DR CHAU CHAK WING BUILDING AT THE UNIVERSITY OF TECHNOLOGY, SYDNEY (SYDNEY)**

Presented by Marco Berti, lecturer,  
Management Discipline Group, University of  
Technology Sydney (Sydney)

University of Technology Sydney (and UTS Business in particular) has come at the forefront of the trend among tertiary institutions to establish new buildings, in the hopes of improving students' learning experiences, but also to increase the visibility of institutions in a highly competitive education market. UTS's new business school, by "starchitect" Frank Gehry, had a particularly ambitious intent: to promote greater internal and external engagement and collaboration in research, teaching and learning. Since the building's inauguration in February 2015, a team of researchers from UTS Business has been collecting data to assess to what extent these ambitions have been met. Marco and his team investigated the behaviour and perceptions of academics, students and school administrators. While the research is ongoing, Marco will present some of these findings at Old School/New School. The findings provide interesting insights into the quality of the design of this building and, more importantly, on the complex relationship between architectural design and organizational behaviour, questioning whether the design of a space directly shapes work practices.

# Keynote Speakers

## MONICA PARKER

Founder, Hatch (London)

As founder of Hatch, Monica brings to the table a vast knowledge of navigating and communicating organizational change. An international speaker and presenter, she is a regular contributor to the *Huffington Post* and has appeared on BBC Worldwide as an authority on workplace strategy. Monica has fifteen years experience in understanding the influence of environments and processes on human behaviour. Monica's research focuses on sustainable behaviour in organizations, its barriers, and its benefits. Her current role is to help clients challenge their notion of the status quo and see the performance benefits of behavioural workplace transformation. She specializes in an evidence-based approach to change, using social scientific methods of data collection grounded in a pragmatic and commercial foundation. Monica's clients include Fortune/FTSE 100 and hypergrowth firms such as Dyson, Microsoft, Google, McKinsey, Deloitte, Royal Bank of Scotland, BBC, L'Oreal, LinkedIn, and Prudential.



## JOHN WARDLE

Principal, John Wardle Architects (Melbourne)

John Wardle established his architectural practice in Melbourne and has led the growth of the practice from working on small domestic dwellings to large university buildings, museums and commercial offices. John has an international reputation as a design architect and has developed a design process that builds upon ideas that evolve from a site's topography, landscape, history and context and a client's particular aspirations and values. The architecture of John Wardle Architects (JWA) is closely tailored to its place and is highly experiential in nature. John is attuned to the importance of detail – it is through the detail that the nature of material, the fit to function and the experience of occupation is expressed. John has formed strong links with both artists and public art galleries and as a practicing architect and board member of the Ian Potter Museum of Art has contributed to important public art programs. In 2002 and 2006, JWA was awarded the Australian Institute of Architects' (AIA) Sir Zelman Cowen Award for the most outstanding work of public architecture in Australia. In 2015, JWA also received the inaugural Daryl Jackson Award for Education Architecture at the AIA National Awards for the Melbourne School of Design at the University of Melbourne. The work of JWA is published widely in Australian and international journals and has been celebrated in a book *Volume – John Wardle Architects* published by Thames and Hudson in 2008.



# Keynote Speakers

## MICHÁL COHEN

Director, Walters & Cohen Architects (London)

Michál was born and educated in South Africa, and set up Walters & Cohen with Cindy Walters in 1994. She has led a variety of projects, including a wellness centre in the Bank of England, a gallery in Durban and, currently, a new teaching building at St Paul's Boys' School in London. Michál is responsible for many of the practice's education projects, which began in 2003 with designs for an exemplar primary school under the British government's Building Schools for the Future initiative, and has resulted in several award-winning buildings. Michál takes a keen interest in government initiatives and policy, as well as how children learn, and her expertise on the subject of design in learning environments is now well established. In the UK, Michál is one of the Design Council Cabi's Built Environment Experts, a trustee for Portsmouth Naval Base Property Trust and a member of the Design South East and London Legacy Development Corporation design review panels.



## JAN OWEN

CEO, Foundation for Young Australians (Melbourne)

A pioneer of the youth sector in Australia, Jan has dedicated most of her working life to social change and encouraging young people to give back and invest their talents in their communities and things they are passionate about. In 2014, Jan received the degree of Doctor of Letters (honoris causa) from the University of Sydney in recognition of her significant contribution to young people and policy in Australia. In 2012, Jan was named the inaugural Australian Financial Review & Westpac Group Woman of Influence. In 2000 she was awarded membership of the Order of Australia for services to children and young people and in 1999 received a fellowship for leadership and innovation to the Peter Drucker Foundation in the US. Jan is the author of *Every Childhood Lasts a Lifetime* (1996) and *The Future Chasers* (2014). Before joining FYA, Jan was executive director of Social Ventures Australia, which aims to increase the impact of the Australian social sector. Prior to this, Jan founded the CREATE Foundation, the national consumer body for children and young people in out of home care. Jan has contributed to the establishment of many social change organizations in Australia and served on a wide range of boards. She is currently member of the RMIT College of Business Industry Advisory Board, chair of Melbourne Social Equity Institute (University of Melbourne) Advisory Board, member of Malthouse Theatre Board, a fellow of the Royal Society for the encouragement of the Arts, Manufacturers and Commerce (RSA), and patron of Vanish and Children's Ground.



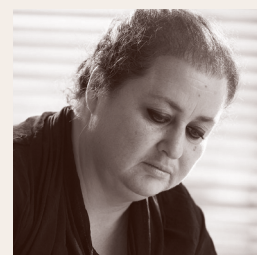


# Case Study Speakers

## **LIBBY GUJ**

**Design Principal, JCY Architects and Urban Designers (Perth)**

Elisabetta Guj (Libby) is the design principal for JCY Architects and Urban Designers and has been the design leader for almost all of JCY's education projects since she commenced with the practice in 1988. Her work has included high schools, TAFEs and university projects, as well as many of JCY's civic, cultural, infrastructure, social and housing projects and has included urban design, masterplanning and built projects. Many of these projects have been recognized through Australian Institute of Architects' awards, with two projects winning RIBA International Architecture Awards and numerous being selected as finalists at World Architecture Festival in Barcelona and in Singapore. Libby approaches all projects in a multidimensional way, initially focusing on all facets of the people who will "live" in each project in the present and the future, context, physical, social, cultural, local and global elements as well as environmental elements. From this base, projects are evolved and sculpted into places, spaces, landscapes, objects and networks of inhabitable, functional and flexible facilities from which learning can grow and communities can be enriched and flourish.



## **DEBBIE RYAN**

**Director, McBride Charles Ryan (Melbourne)**

Debbie Ryan is an owner of McBride Charles Ryan (MCR) with vast experience in the design of commercial, institutional and domestic projects. Her singular design abilities, acute sense of composition and extensive product knowledge has given her a wide and well-deserved reputation. Both scientific and intuitive, Debbie has a special ability to conceive schemes that perfectly meet the requirements of each client and each building. Coupled with her skills in negotiation, she enables the practice to align the requirements (often disparate) found in a large client group without compromising the unique design concepts. Debbie's work has been widely published and has gained recognition as a public speaker and critic of design and architecture. MCR believes that architecture should never relinquish experimentation and uses architecture of all scales as a means to this end. With each project, forms, spaces, materials and context are all up for grabs. MCR work on a wide range of project types where each individual project explores the tension between the program, local tradition and experimentation, responding to increasingly conservative local guidelines.



09

# Case Study Speakers

## MARCO BERTI

Lecturer, Management Discipline Group, University of Technology Sydney (Sydney)

Dr Marco Berti is a researcher, lecturer and consultant in management and organizational behaviour. Marco has enjoyed a twenty-year-long international career as a management consultant, specializing in organizational development and strategy and serving organizations in various industries. He has since tested and strengthened his research capabilities by obtaining a doctorate in management. Since 2014 he has become a full-time academic, joining one of Australia's leading business schools, University of Technology Sydney Business, as a lecturer in the Management Discipline Group and a core member of the Centre for Management and Organizational Studies. His research and teaching focus on investigating the antecedent and consequence of innovation in management practices, and on the role of material elements, such as architecture and technology, in shaping work and social practices. Building on his consulting expertise and research findings, he is also engaging with industry and practitioners to deliver workshops and executive training for corporate and institutional clients.



# Contacts

## **Event enquiries**

Jacinta Reedy  
Associate Publisher  
[jacinta.reedy@archmedia.com.au](mailto:jacinta.reedy@archmedia.com.au)

## **Sponsorship enquiries**

Emma Inteman  
Sponsorship and Events  
[emma.inteman@archmedia.com.au](mailto:emma.inteman@archmedia.com.au)  
+61 3 8699 1024  
0451 837 345

## **Organizer**

Architecture Media  
Level 6, 163 Eastern Road  
South Melbourne Vic Australia 3205  
Telephone +61 3 8699 1000  
[designspeaks.com.au](http://designspeaks.com.au)



architecture  
media