

Sydney / Tuesday 18 August 2015

Design Speaks:

Work Place/Work Life

2015 Program

A forum about the future
of workplace design



Principal Partner



Major Partners



Supporting Partners



Organizer



Australian Institute of Architects



A DIA endorsed CPD
event for DIA members

Program

The annual Work Place/Work Life forum brings together Australasia's leading practitioners. In 2015 they will gather at Sydney's Eternity Playhouse to discuss the issues shaping workplace design, share their experiences and speculate on

possible futures. The three keynote speakers will be followed by moderated panel discussions in which panel members will draw the audience into the conversation.

Venue: Eternity Playhouse
39 Burton Street
Darlinghurst NSW 2010

Date: Tuesday 18 August 2015

8.45 am Arrival and seating
9.00 am Welcome from Cameron Bruhn, editorial director, Architecture Media
9.15 am **KEYNOTE ADDRESS**
Clive Wilkinson, president and design director, Clive Wilkinson Architects (USA)
"The theatre of work"
10.00 am **MODERATED PANEL DISCUSSION**
Chaired by Robert Backhouse (managing director, Hassell) with panellists Clive Wilkinson (president and design director, Clive Wilkinson Architects) and Philip Vivian (director, Bates Smart)
10.45 am Morning tea
11.30 am **KEYNOTE ADDRESS**
Jan Owen, CEO, Foundation for Young Australians
"What to expect from the future of work"
12.15 pm **MODERATED PANEL DISCUSSION**
Chaired by Antoinette Trimble (strategic workstyle consultant,

Veldhoen + Company) with panellists Zrinka Lovrencic (managing director, Great Place to Work Australia) and Jan Owen (CEO, Foundation for Young Australians)
1.00 pm Lunch break
2.15 pm **KEYNOTE ADDRESS**
Colin Seah, founder and director of design, Ministry of Design (Singapore)
"Heigh ho, heigh ho, it's off to work we go"
3.00 pm **MODERATED PANEL DISCUSSION**
Chaired by Richard Francis-Jones (design director, Francis-Jones Morehen Thorp) with panellists Donna Wheatley (associate and workplace design leader, Warren and Mahoney Architects) and Colin Seah (Director of Design, Ministry of Design)
3.45 pm Closing comments from Cameron Bruhn, editorial director, Architecture Media
4.00 pm Closing drinks
5.00 pm Event closes

Keynote Addresses

“THE THEATRE OF WORK”

Presented by Clive Wilkinson, president and design director, Clive Wilkinson Architects (USA)

The workplace projects of Clive Wilkinson have helped define today's changing workplace and its social relevance. In his keynote presentation, Wilkinson will discuss the critical forces that have shaped the modern workplace, drawing on examples from his extensive portfolio, including Googleplex in Silicon Valley, Macquarie Group's One Shelley Street in Sydney, and workplaces for Disney, JWT New York and TBWA/Chiat/Day in Los Angeles. Beyond stylistic concerns about workplace design, his work aims to promote the building of creative communities, and in doing so, elevate the workplace to its rightful place as a "theatre of human experience."

“WHAT TO EXPECT FROM THE FUTURE OF WORK”

Presented by Jan Owen, CEO, Foundation for Young Australians

What will work in Australia look like in the future? In what industries will we be working in and in what way? What will future members of the workforce be expecting from their employers and colleagues? And how do we prevent future shock? With a background in social change organizations and through her work with young Australians, Owen will explore these questions and many more in her keynote presentation.

“HEIGH HO, HEIGH HO, IT'S OFF TO WORK WE GO”

Presented by Colin Seah, founder and director of design, Ministry of Design (Singapore)

The rhythms, processes and communities that have defined our experience of the contemporary workplace continue to evolve at a rapid rate. How has it evolved and more critically, where is it headed? Through the lens of Ministry of Design's projects, including the BBH and Leo Burnett Offices, Seah will share his thoughts of the continuum of workplace design, differentiating what he sees as essential versus trendy design. He will also discuss this from the perspective of the workplace in Singapore, a global hub that seeks to balance its past with its future.

03

Keynote Speakers

CLIVE WILKINSON

President and Design Director, Clive Wilkinson Architects (USA)

Clive Wilkinson is an architect, designer, writer and strategist with particular expertise in the application of urban design thinking to interior design, specifically in workplace and educational communities. He was born in South Africa and educated in the UK. His practice, Clive Wilkinson Architects, was established in Los Angeles in 1991, and is a global leader in workplace design.



JAN OWEN

CEO, Foundation for Young Australians

Before joining Foundation for Young Australians, Jan Owen was executive director of Social Ventures Australia, which aims to increase the impact of the Australian social sector. Owen has contributed to the establishment of many social change organizations in Australia and has served on a wide range of boards, including the Australian National Development Index and the RMIT College of Business Industry Advisory Board. In 2012, Owen was named the inaugural Australian Financial Review and Westpac Woman of Influence 2012.



COLIN SEAH

Founder and Director of Design, Ministry of Design (Singapore)

Architecturally trained in the US and licensed in Singapore, Colin Seah honed his sensibilities working for the likes of Rem Koolhaas and Daniel Libeskind. He spent four years at the National University of Singapore's Department of Architecture researching design pedagogy and serving as a design critic. As Ministry of Design's founder and director of design, Seah was named Designer of the Year by International Design Awards USA in 2010, and is a two-time recipient of Singapore's highest design accolade, the President's Design Award. Seah has been invited by the Singapore Tourism Board to redefine Singapore as a destination for 2020 and beyond.

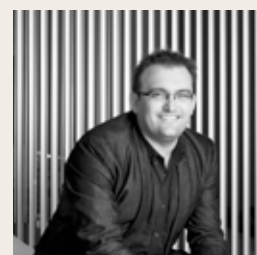


Panel Chairs

ROBERT BACKHOUSE

Managing Director, Hassell

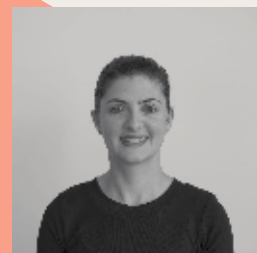
Robert Backhouse is the managing director of international design practice Hassell and has built a reputation for design innovation and leadership through major projects in Australia and Asia. His work ranges from some of the world's largest and most complex workplaces to one-off apartments and houses. In Australia, he has worked on projects for clients including ANZ, BHP Billiton, Westpac and Medibank. Backhouse is a fellow of the Design Institute of Australia and a member of the interior design course advisory committee at RMIT University.



ANTOINETTE TRIMBLE

Strategic Workstyle Consultant, Veldhoen + Company

Antoinette Trimble is an architect and consultant with over ten years experience in workplace transformation. Trimble is passionate about improving our working lives. She works closely with clients to understand their business, guiding them through key decisions about how they want to work in the future. By translating their vision into a tangible concept, Trimble helps organizations align the design of buildings, furniture and technology to a program of behavioural change, creating a new working style. Trimble is a strategic workstyle consultant at Veldhoen + Company. She leads the physical stream of work for activity-based working projects in Australia and New Zealand.



RICHARD FRANCIS-JONES

Design Director, Francis-Jones Morehen Thorp

Richard Francis-Jones is a highly awarded and leading contemporary Australian architect. Francis-Jones is a Fellow of the Australian Institute of Architects, and in 2012 was made an Honorary Fellow of the American Institute of Architects. Francis-Jones has led a distinguished architectural career, designing many highly-awarded buildings and winning several international architectural competitions. Richard has taught and lectured in architecture, design and theory in Australia and abroad since 1987, and is currently a visiting professor at the University of New South Wales. In 2008 he was creative director of the Australian Institute of Architects National Conference.



Panellists

PHILIP VIVIAN

Director, Bates Smart

Philip Vivian is a design director of Bates Smart, an award winning architecture practice with studios in Sydney and Melbourne. He holds a Master of Science in Architecture and Urban Design from Columbia University in New York and a Bachelor of Architecture from the University of Western Australia. Vivian's design leadership has ensured numerous design excellence competition wins and awards, underpinning the successful growth of the Bates Smart Sydney studio over the past fifteen years. His projects have received thirteen Australian Institute of Architects' design awards, ranging across Commercial Architecture, Interior Architecture, Urban Design, ESD and Heritage categories. He has completed campus offices for Leighton Group, TransGrid, New South Wales Police and New South Wales Attorney General's Department.



ZRINKA LOVRENCIC

Managing Director, Great Place to Work Australia

Zrinka Lovrencic is one of the directors and a member of the management consulting team at Great Place to Work Australia. Since 2008, Lovrencic has been working with leaders and managers in a wide variety of industries to assess their workplace cultures and support them as they seek to transform their organizations into great workplaces. Lovrencic is a featured speaker on workplace trends, management strategies and people practices aimed at improving workplace productivity. Lovrencic holds a Bachelor of Commerce and Masters of Management from Macquarie University as well as an MBA from Macquarie Graduate School of Management.



DONNA WHEATLEY

Associate and Workplace Design Leader, Warren and Mahoney Architects

Dr Donna Wheatley is an associate and workplace design leader at Warren and Mahoney Architects. She is an experienced strategist and registered architect with a work portfolio covering major workplace, commercial, cultural, masterplanning and educational projects. She holds a PhD (Architecture) from the University of Sydney, two first-class honours degrees in architecture and is a sessional academic at University of New South Wales and University of Sydney. Her PhD examined the notion that spatial design can impact corporate identity, branding, employee engagement, innovation, interaction and productivity.



Contacts

Event enquiries

Jacinta Reedy
Associate publisher
jacinta.reedy@archmedia.com.au

Sponsorship enquiries

Neil Williams
Sales Director
neil@archmedia.com.au
03 8699 1032

Organizer

Architecture Media
Level 6, 163 Eastern Road
South Melbourne Vic Australia 3205
Telephone +61 3 8699 1000
designspeaks.com.au